



**CORE INDICATORS FOR PUBLIC  
HEALTH IN ONTARIO**

**Association of Public Health  
Epidemiologists in Ontario**

# *Core Indicators for Public Health on Alcohol and Substance Use*

## **Meeting of the National Surveillance Advisory Committee on Substance Use**

**May 26, 2009  
Shanna Hoetmer**



## Overview

- Background:
  - Association of Public Health Epidemiologists in Ontario (APHEO)
  - Core Indicators for Public Health in Ontario
  - Ontario Public Health Standards
- Current Indicators Related to Alcohol Use
- Information Gaps
- Opportunities for Moving Forward



## APHEO's mission

- To advance and promote the discipline and professional practice of epidemiology in Ontario public health units



## APHEO's 'Core Indicators for Public Health in Ontario' Project

- Collaborative volunteer initiative amongst professionals in the broader public health epidemiology community
- Started in 1998
- Over 120 public health indicators, accompanying resources, data sources and syntax files available on APHEO's website ([www.apheo.ca](http://www.apheo.ca))
- Purpose of current work: To standardize definitions and calculation methods for chronic disease and risk factor indicators for use at the local level to build capacity for chronic disease surveillance



# CORE INDICATORS FOR PUBLIC HEALTH IN ONTARIO

## Association of Public Health Epidemiologists in Ontario

www.apheo.ca

APHEO - Core Indicators & Resources List - Windows Internet Explorer

http://www.apheo.ca/index.php?pid=55

File Edit View Favorites Tools Help

APHEO - Core Indicators & Resources List

To advance and promote the discipline and professional practice of epidemiology in Ontario public health units

Association of Public Health Epidemiologists in Ontario

Main  
About APHEO  
Membership  
Meetings  
Conferences  
Core Indicators  
APHEO Wiki  
Projects  
EPI Jobs  
Links  
Contact Us

### Core Indicators & Resources List

1. **Population**
2. **Environment and Health**
  - o 2A. Social Environment and Health
  - o 2B. Physical Environment and Health
3. **Mortality, Morbidity and Health-Related Quality of Life**
4. **Chronic Disease and Injuries**
  - o 4A. Chronic Diseases
  - o 4B. Cancer Incidence and Early Detection of Cancer
  - o 4C. Injury Prevention and Substance Abuse Prevention
5. **Behaviour and Health**
  - o 5A. Smoking
  - o 5B. Alcohol
  - o 5C. Physical Activity
  - o 5D. Nutrition and Healthy Weights
  - o 5E. Sun Safety
6. **Family Health**
  - o 6A. Sexual Health
  - o 6B. Reproductive Health
  - o 6C. Child and Adolescent Health
7. **Mental Health**
8. **Infectious Diseases**
9. **Use of Health Services**
10. **Resources**

Internet 100%

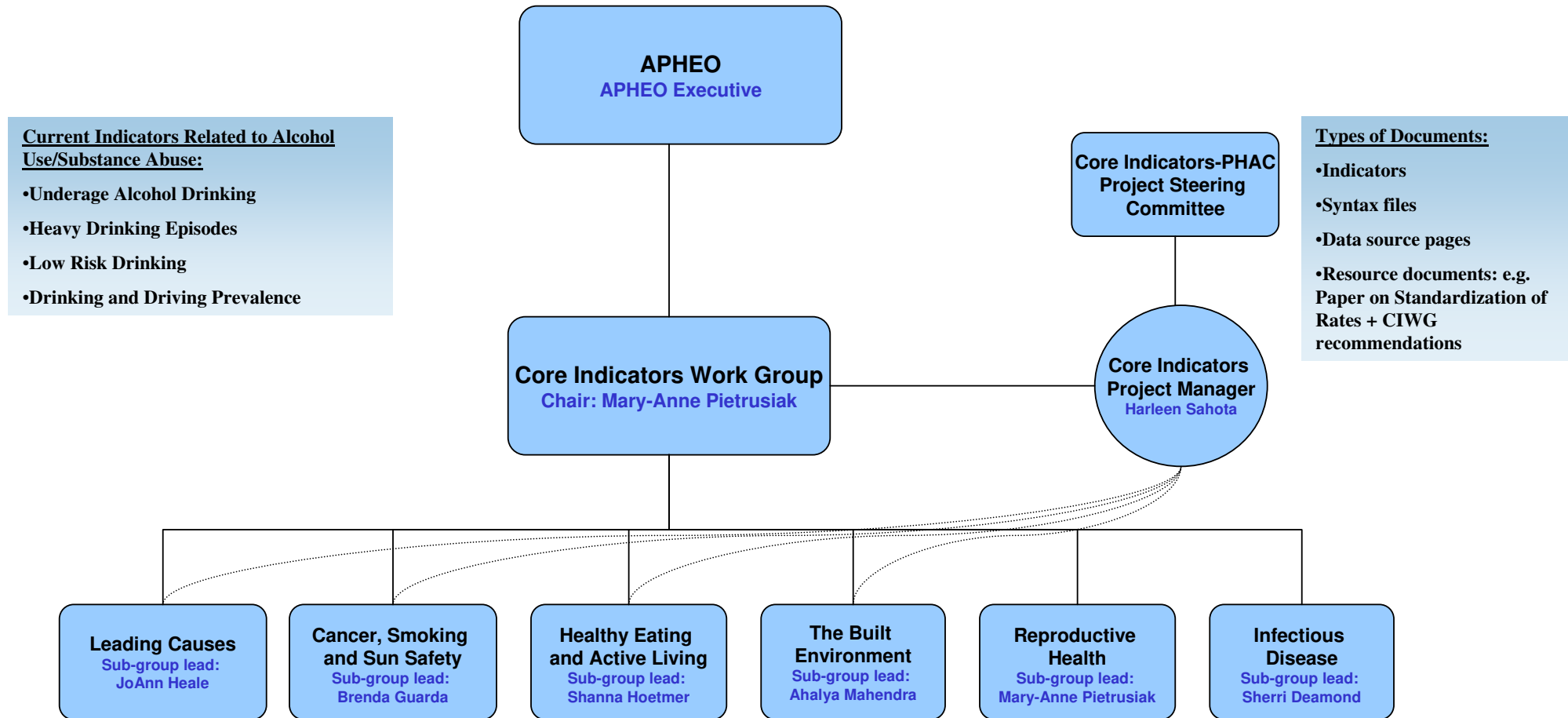
start APHEO - Core Indic... Microsoft PowerPoint ... 10:06 AM



# CORE INDICATORS FOR PUBLIC HEALTH IN ONTARIO

# Association of Public Health Epidemiologists in Ontario

## Core Indicators for Public Health in Ontario- Organizational Structure



Note: In addition to this internal structure, members of the Core Indicators for Public Health in Ontario project liaise with external organizations as necessary and as required.



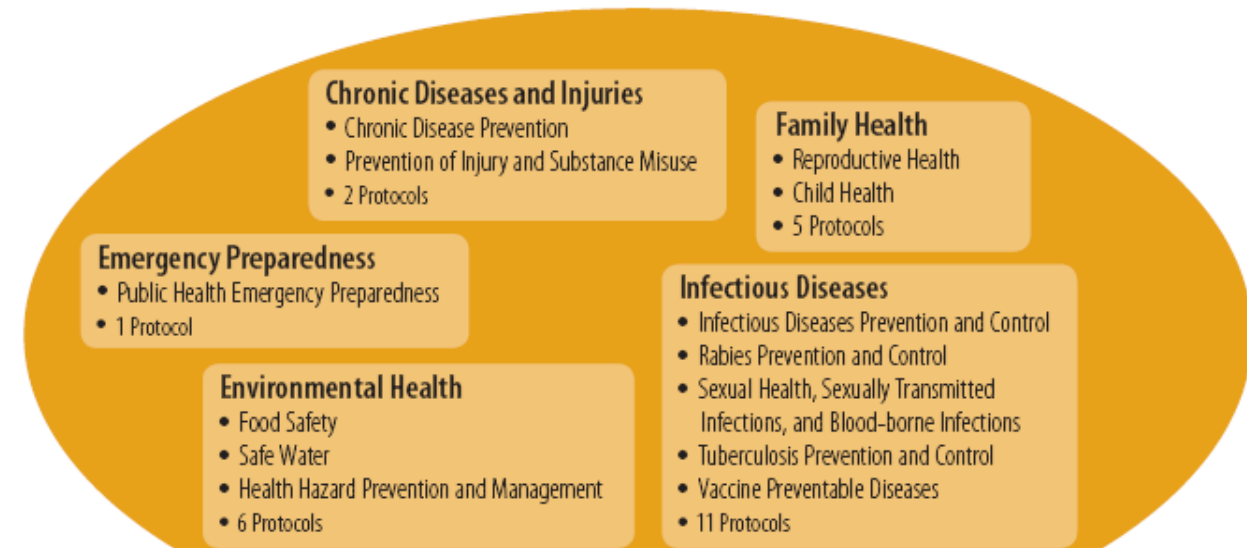
## Ontario Public Health Standards (OPHS)

- Guidelines under Section 7 of the Health Protection and Promotion Act, R.S.O. 1990, c. H.7.
- Establish requirements for fundamental public health programs and services in Ontario
- Include population health assessment and surveillance in program areas of:
  - Chronic Disease Prevention
  - Prevention of Injury and Substance Misuse

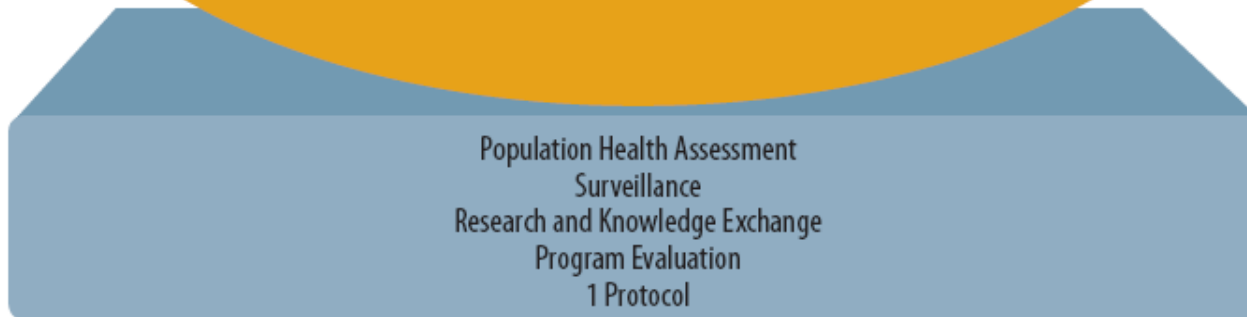


### OPHS “Atlas”

Program Standards and Protocols



Foundational Standard and Protocol

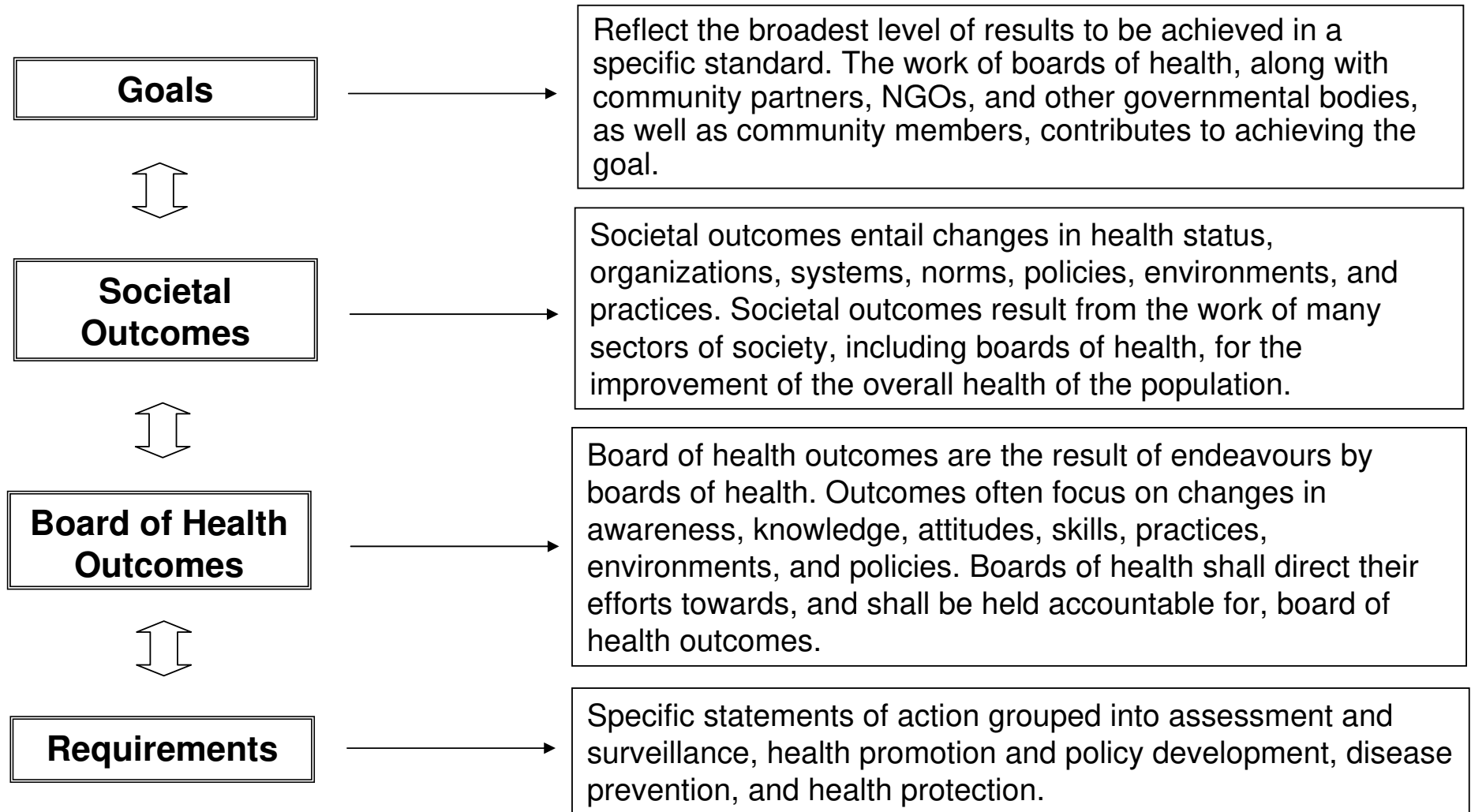


Principles





# OPHS Outcomes and Requirements





## OPHS Requirements Related to Alcohol and Substance Use

- Chronic Disease Prevention:
  - The board of health shall conduct epidemiological analysis of surveillance data, including monitoring trends over time, emerging trends, and priority populations ... in the area of alcohol use.
- Prevention of Injury and Substance Misuse:
  - The board of health shall conduct epidemiological analysis of surveillance data, including monitoring trends over time, emerging trends, and priority populations ... in the area of alcohol and other substances



## Prevention of Injury and Substance Misuse

- Substance misuse refers to the harmful use of any substance, such as alcohol, a street drug, an over-the-counter drug, or a prescribed drug.
- The program name is meant to clearly articulate the need to address the prevention of adverse health outcomes associated with:
  - Substance abuse
  - The illegal use of alcohol and other substances (e.g. preventing alcohol from being served to minors and preventing illegal drug use)
  - Delaying the age of initial use of alcohol and other substances



## Current Indicators Related to Alcohol Use

- Underage Alcohol Drinking
- Heavy Drinking Episodes
- Low Risk Drinking
- Drinking and Driving Prevalence



## Underage Alcohol Drinking

### Definition:

- Proportion of adolescents under the legal age limit (aged 12 to 18) that have consumed alcohol in the past 12 months

### Data Source:

- Canadian Community Health Survey (CCHS)



## Heavy Drinking Episodes

### Definition:

- Proportion of the population, aged 12 and over, who reported drinking 5 or more drinks on at least one occasion per month in the past 12 months

### Data Source:

- Canadian Community Health Survey (CCHS)



## Low Risk Drinking (Under Review)

### Definition:

- Proportion of the population, aged 19 and over, who exceeded the low-risk drinking guidelines (i.e. males who drank more than 14 drinks per week, females who drank more than 9 drinks per week or individuals who drank more than 2 drinks on any day of the previous week)

### Data Source:

- Canadian Community Health Survey (CCHS)



## Drinking and Driving Prevalence (Under Review)

### Definitions:

- Proportion of drivers that drove a motor vehicle after having 2 or more drinks in the hour before they drove in the past 12 months
- Proportion of population, aged 12 and over, that drove a recreational vehicle after having 2 or more drinks in the hour before they drove in the past 12 months.

### Data Source:

- Canadian Community Health Survey (CCHS)



## Information Gaps

- Hazardous/harmful alcohol use among target populations for public health programming, including adolescents
- Age of initiation
- Harmful use of other substances including street drugs, over-the-counter drugs and prescribed drugs
- Alcohol dependence



## Opportunities for Moving Forward

- Public Health Monitoring of Risk Factors in Ontario for 2009 OSDUHS (Pilot with CAMH)
- Canadian Community Health Survey to include Illicit Drug Use module for Ontario for 2009-10
- Alcohol Use Disorders Identification Test (A.U.D.I.T.)
- So far no indicators for alcohol/drug abuse under mental health indicators



# Discussion