

Core Indicators Project: 20th Anniversary

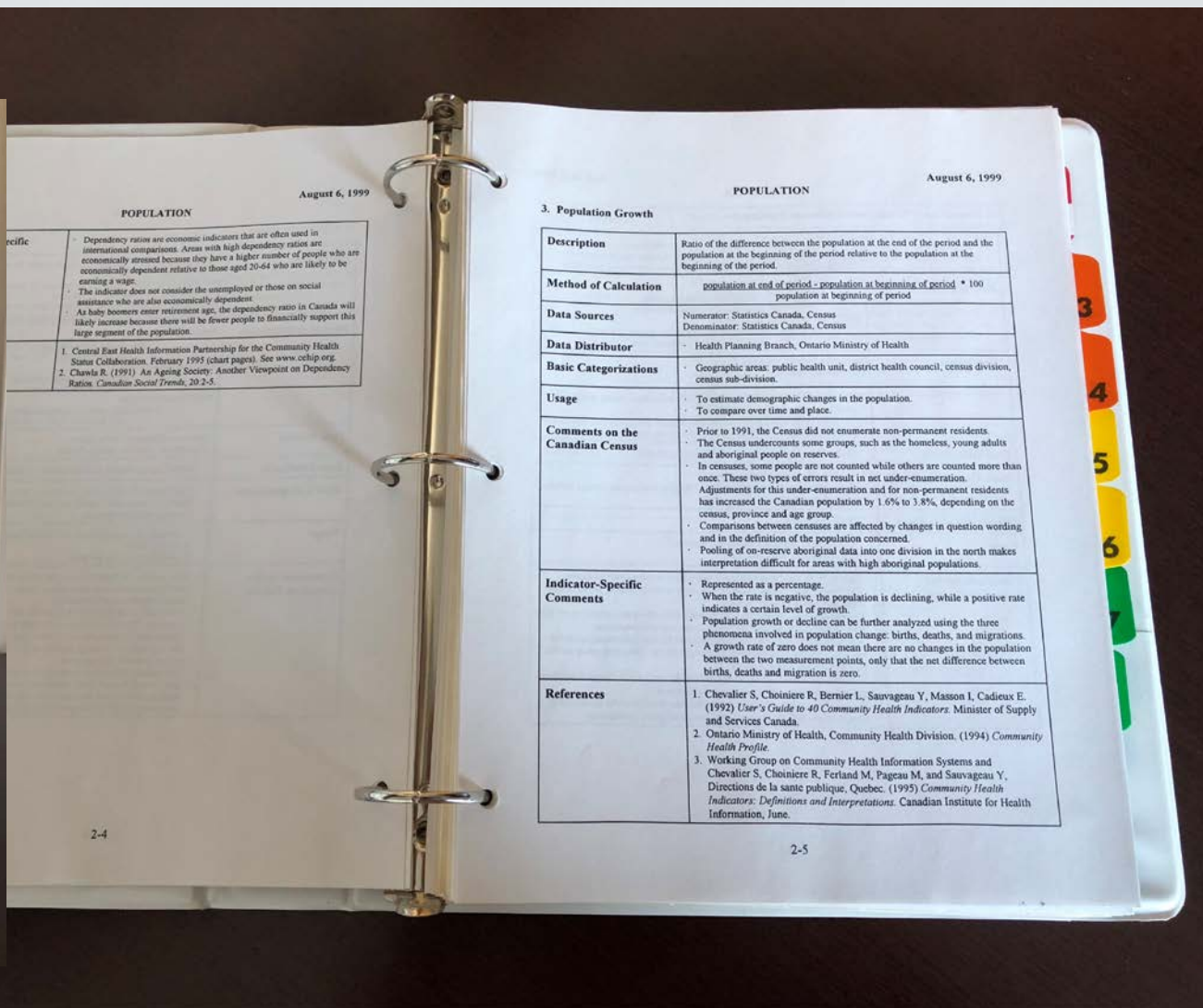
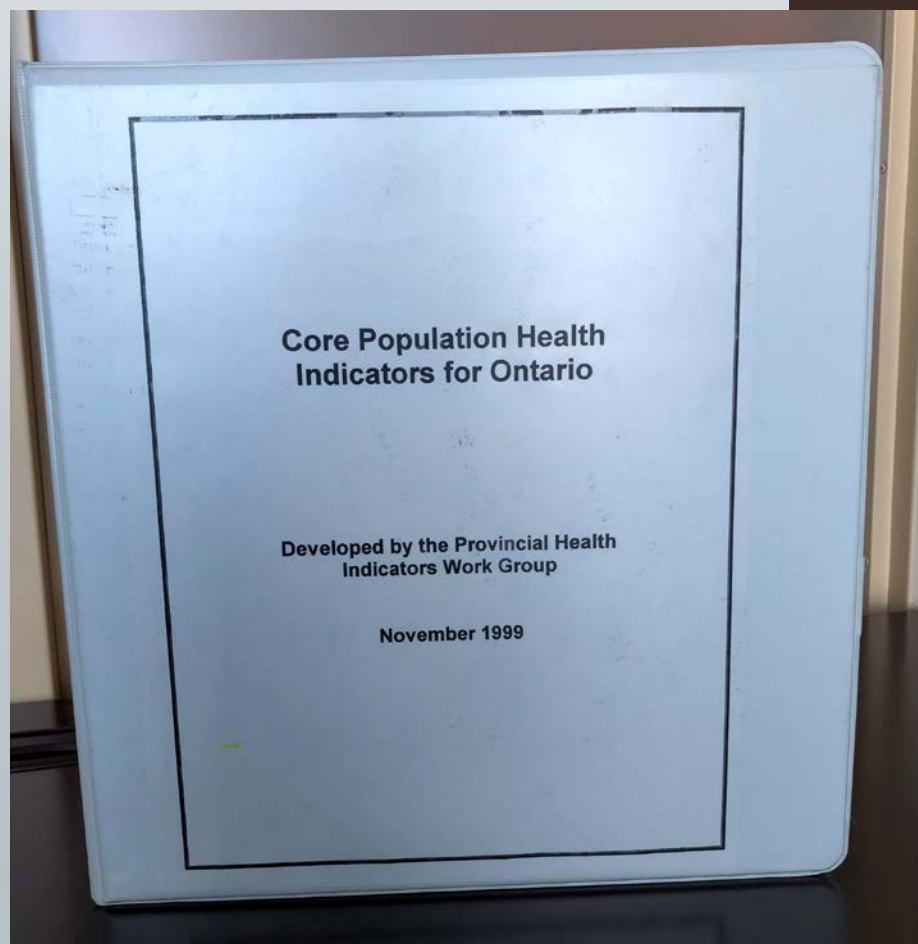
APHEO Conference
November 27, 2018



How it all began...

- Epidemiologists in Ontario recognized the need for consistency among health reports
- The Provincial Health Indicators Work Group (PHIWG) was established February, 1998 as an initiative of the Association of Public Health Epidemiologists in Ontario (APHEO)
- Mandate:
... to systematically define and operationalize a core set of health indicators

Initial Product



Entering the new millennium



Core Indicators for Public Health in Ontario

APHEO

Association of Public Health Epidemiologists in Ontario



- Home
- Background
- FAQs
- Indicators
- Search Indicators
- Resources
- APHEO Website
- Admin


List of Indicators:

1. **Population**
2. **Environment and Health**
 - 2A. Social Environment and Health
 - 2B. Physical Environment and Health
3. **Mortality, Morbidity and Health-Related Quality of Life**
4. **Chronic Disease and Injuries**
 - 4A. Chronic Diseases
 - 4B. Cancer Incidence and Early Detection of Cancer
 - 4C. Injury Prevention and Substance Abuse Prevention
5. **Behaviour and Health**
 - 5A. Smoking
 - 5B. Alcohol
 - 5C. Physical Activity
 - 5D. Nutrition and Healthy Weights
 - 5E. Sun Safety
6. **Family Health**
 - 6A. Sexual Health
 - 6B. Reproductive Health
 - 6C. Child and Adolescent Health
7. **Mental Health**
8. **Infectious Diseases**
9. **Use of Health Services**
10. **Resources**

1. Population

Updated website

To advance and promote the discipline and professional practice of epidemiology in Ontario public health units



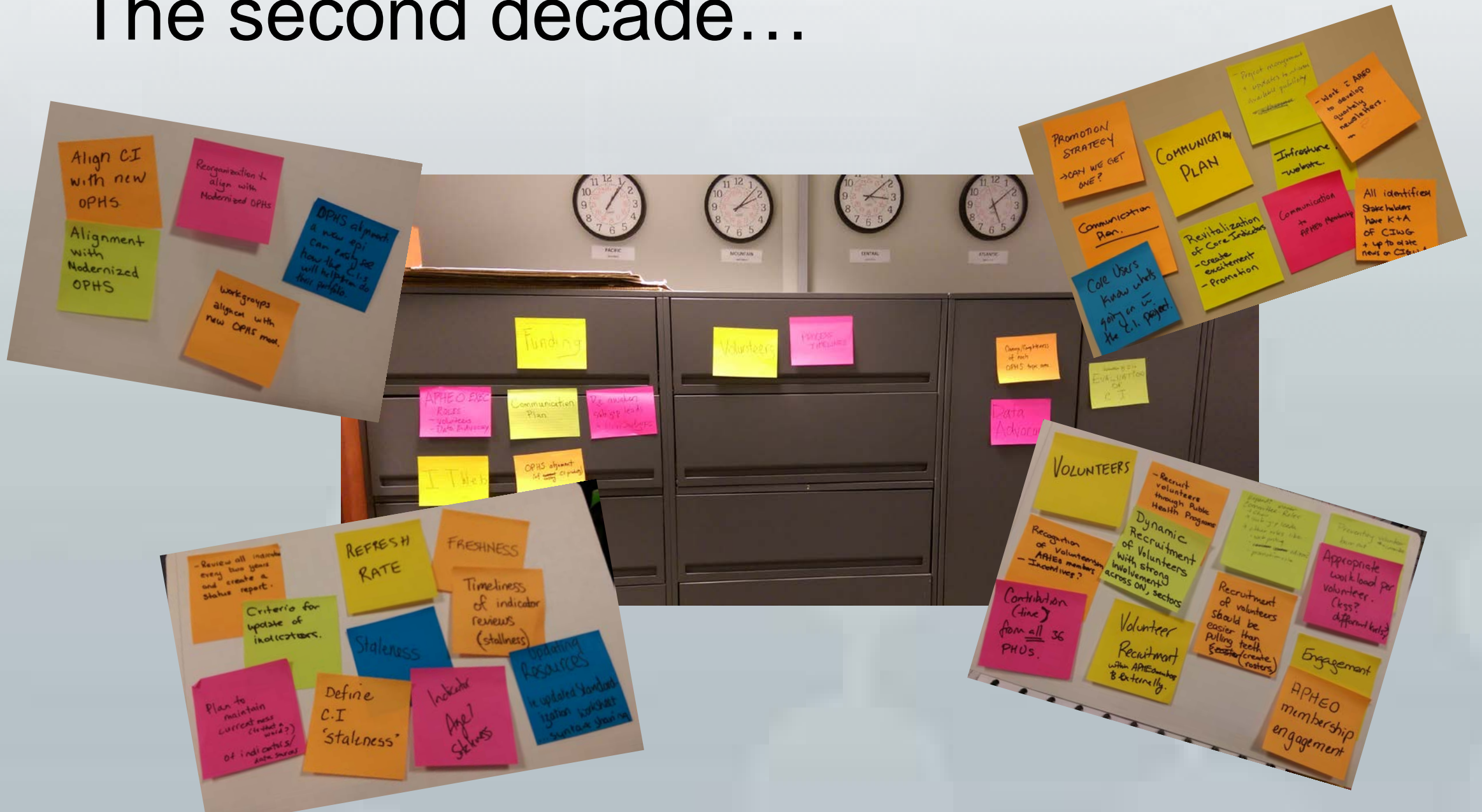
Association of Public Health Epidemiologists in Ontario

Main
About APHEO
Membership
Meetings
Conferences
Core Indicators
APHEO Wiki
Projects
EPI Jobs
Links
Contact Us

Core Indicators & Resources List

1. **Population**
2. **Environment and Health**
 - o 2A. Social Environment and Health
 - o 2B. Physical Environment and Health
3. **Mortality, Morbidity and Health-Related Quality of Life**
4. **Chronic Disease and Injuries**
 - o 4A. Chronic Diseases
 - o 4B. Cancer Incidence and Early Detection of Cancer
 - o 4C. Injury Prevention and Substance Abuse Prevention
5. **Behaviour and Health**
 - o 5A. Smoking
 - o 5B. Alcohol
 - o 5C. Physical Activity
 - o 5D. Nutrition and Healthy Weights
 - o 5E. Sun Safety
6. **Family Health**
 - o 6A. Sexual Health
 - o 6B. Reproductive Health
 - o 6C. Child and Adolescent Health

The second decade...





2017-2019 Strategic Goals

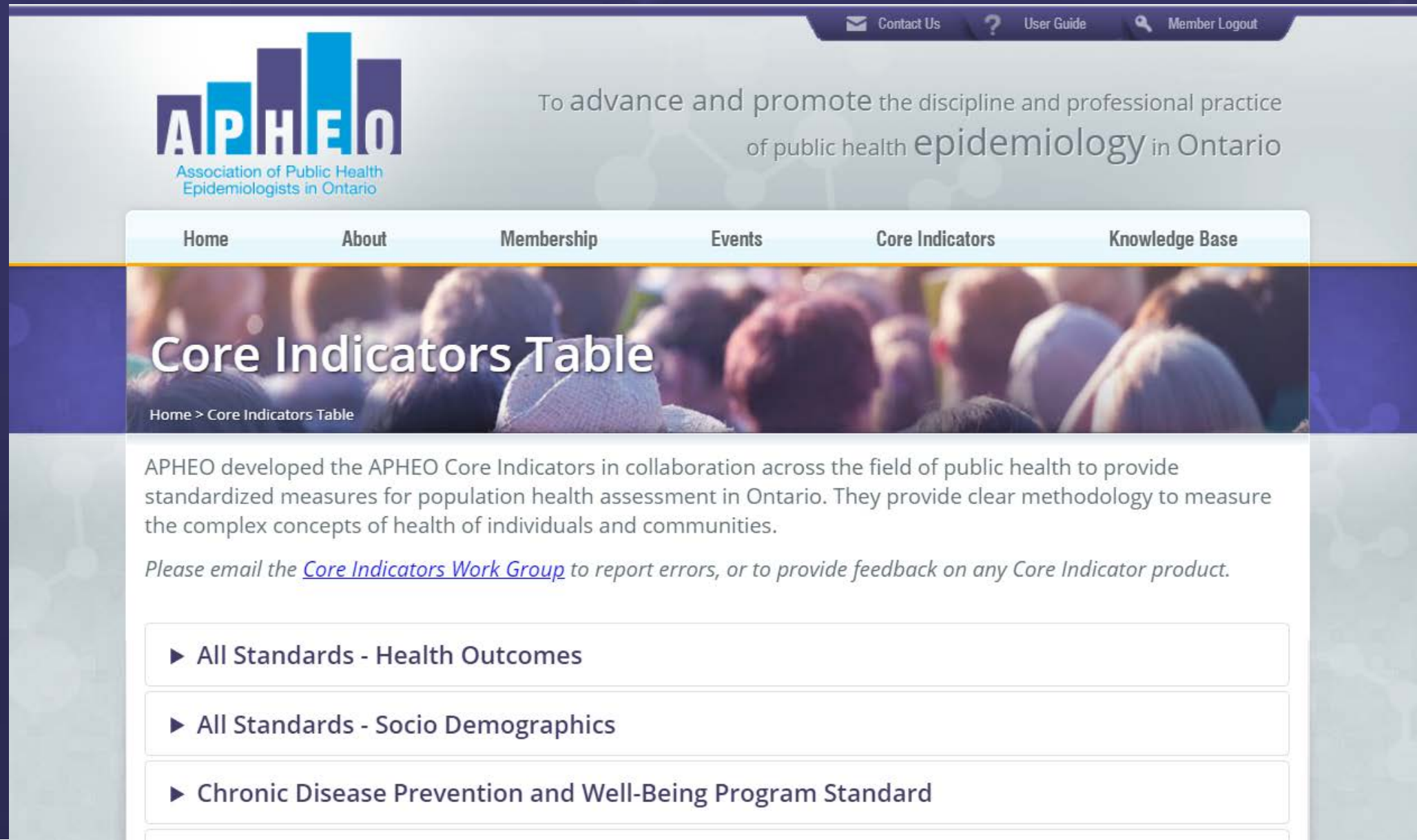
- Public Health Gaps & Alignment
- Review Frequency
- Process Timelines
- Communication Plan
- Resources
- Volunteers
- Partner Engagement
- Evaluation
- Data Advocacy



2017-2019 Strategic Goals

- Public Health Gaps & Alignment
- Review Frequency
- Process Timelines
- Communication Plan
- Resources
- Volunteers
- Partner Engagement
- Evaluation
- Data Advocacy

Where are we now?



The screenshot shows the APHEO website. At the top right, there are links for "Contact Us", "User Guide", and "Member Logout". The APHEO logo is on the left, with the text "Association of Public Health Epidemiologists in Ontario". The main navigation menu includes "Home", "About", "Membership", "Events", "Core Indicators", and "Knowledge Base". The "Core Indicators" menu item is highlighted. Below the navigation is a banner image of a crowd of people with the text "Core Indicators Table". A breadcrumb trail reads "Home > Core Indicators Table". The main content area contains a paragraph about APHEO's development of the Core Indicators, a link to email the Core Indicators Work Group, and three expandable menu items: "All Standards - Health Outcomes", "All Standards - Socio Demographics", and "Chronic Disease Prevention and Well-Being Program Standard".

Contact Us ? User Guide Member Logout

APHEO
Association of Public Health
Epidemiologists in Ontario

To advance and promote the discipline and professional practice
of public health **epidemiology** in Ontario

Home About Membership Events **Core Indicators** Knowledge Base

Core Indicators Table

Home > Core Indicators Table

APHEO developed the APHEO Core Indicators in collaboration across the field of public health to provide standardized measures for population health assessment in Ontario. They provide clear methodology to measure the complex concepts of health of individuals and communities.

Please email the [Core Indicators Work Group](#) to report errors, or to provide feedback on any Core Indicator product.

- ▶ All Standards - Health Outcomes
- ▶ All Standards - Socio Demographics
- ▶ Chronic Disease Prevention and Well-Being Program Standard


Hide fields Filter Group Sort ...



<input type="checkbox"/>	Nickname	Name	Leads (lookup)	Memberlist	Product List	Subgroup Category Tag
1	CIWG	Core Indicators Working Group	Caitlyn Paget	https://airtable.com/shrw97LqXD6UqPjTF	https://airtable.com/shrcEpteomiEBUjaY	Core Indicators Work Group
<input type="checkbox"/>	SDOH	Social Determinants of Health	Virginia McFarland	https://airtable.com/shr9FuYEFIZNgz0vw	https://airtable.com/shrhE2VEk1UQCv8Ig	CI Social Determinants of Health
3	Repro	Reproductive Health	Amira Ali	https://airtable.com/shrehDqCidTg2LVL	https://airtable.com/shrQtQ2K4jdGZsOA0	CI Reproductive Health
4	BE	Built Environment	Ahalya Mahendra	https://airtable.com/shrY3Q7QHfmzYjqvn	https://airtable.com/shrVpYTTsycCqXdD	CI Built Environment
5	Immunization	Immunization	Vidya Sunil	https://airtable.com/shr7vSRmpRHSgc9bO	https://airtable.com/shrX4ro5lScfgEFjD	CI Immunization
6	Enviro	Healthy Environments	Mathew Roy, Cam McDermaid	https://airtable.com/shr9KgAGaQw5yBSGL	https://airtable.com/shrX5O31UpXekPjPT	CI Healthy Environments
7	Mental Health	Mental Health	Saamir Pasha	https://airtable.com/shrTYm12CdOUQIawv	https://airtable.com/shrkkVXzZhnHLuQKY	CI Mental Health
8	Oral Health	Oral Health	Debby Oakley, Fangli Xie	https://airtable.com/shrQ2tXZMqhv8r74P	https://airtable.com/shru6oy002xJhn8OC	CI Oral Health
9	Sexual Health	Sexual Health	Dinna Lozano	https://airtable.com/shro8Szed6LzanbLn	https://airtable.com/shrnRonAzaJPIZju	CI Sexual Health
10	Positive Parenting	Positive Parenting		https://airtable.com/shrHjoTsxbnhwi6CL	https://airtable.com/shrGqiZ81vPrTqMRY	CI Positive Parenting
11	Substances	Substance Use (everything except Tobacco)	Kandace Ryckman	https://airtable.com/shrqVS2hRWuWo3ZK	https://airtable.com/shrFlkixxWlvijEOG	CI Substance Use
12	ID	Infectious Diseases	Rebecca Stuart, Dara Spatz-Friedman	https://airtable.com/shrtTGfoABqWgAYcu	https://airtable.com/shrePRVvXJ1CTyB2U	CI Infectious Disease
13	Tobacco+	Comprehensive Tobacco Control	Saamir Pasha, Dinna Lozano	https://airtable.com/shr3DyZgE2mfox3yw	https://airtable.com/shrXpggbVhVzFoDMTu	CI Comprehensive Tobacco Con
14	Injuries	Injury Prevention	Suzanne Fegan	https://airtable.com/shrU3DYXiISFPOpc0	https://airtable.com/shrYO0tblMyJgGsH4	CI Injury Prevention
15	G&D	Healthy Growth & Development	Sarah Collier	https://airtable.com/shrr7MUFKXGCARIXX	https://airtable.com/shrwwfTMVU15BuN39	CI Child and Adolescent Health
16	HEAL	Healthy Eating Active Living (and Body Measures)	Suzanne Fegan	https://airtable.com/shrLNKSCF8EjXkJ	https://airtable.com/shrgAguF9hjn1p5EG	CI Healthy Eating Active Living
17	Outcomes	Health Outcomes	John Barbaro	https://airtable.com/shrTSB1HcNxW7KqUo	https://airtable.com/shrpgsBB0vtuXnDP	CI Health Outcomes
18	Cancer Prev	Cancer Prevention		https://airtable.com/shriTLOADHTCkzyMt	https://airtable.com/shr73xNzp8zxdOZfu	CI Cancer Prevention
19						

What's next?

To advance and promote



Core Indicators
Indicator List
Membership

3 All-Cause Mortality

[Description](#) | [Specific Indicators](#) | [Ontario Public Health Standards \(OPHS\)](#) | [Sources](#) | [ICD Codes](#) | [Analysis Check List](#) | [Reference\(s\)](#) | [Other Reference\(s\)](#) | [Change](#)

Description

- The crude mortality rate is the total number of deaths in a given year relative to the total population for that year (per 100,000).
- Age-specific mortality rate is the number of deaths in a given age group per 100,000 population in that age group over a specified period of time.
- Age-standardized mortality rate (SRATE): the number of deaths that would occur for a given population if that population had the same age distribution as the 1991 Canadian population (per 100,000).
- Standardized mortality ratio (SMR): the ratio of observed deaths to the number expected if the population had the same age-specific death rates as Ontario.

Specific Indicators

- Crude Mortality Rate
- Age-Specific Mortality Rate
- Age-Standardized Mortality Rate (SRATE)
- Standardized Mortality Ratio (SMR)

Ontario Public Health Standards (OPHS)

The Ontario Public Health Standards (OPHS) establish and surveillance, health promotion and policy development Standards that articulate broad societal goals that organizations, and governmental bodies. These Standards entail changes in health status, organizations, systems, the improvement of the overall health of the population, knowledge, attitudes, skills, practices, environmental health must implement to achieve the stated results.

Protocol Requirements Related to this Indicator

The board of health shall collect or access the following Surveillance Protocol, 1b).

Goal Related to this Indicator

Contact Us User Guide Member Login



To advance and promote the discipline and professional practice of public health epidemiology in Ontario

Home About Membership Events Core Indicators Knowledge Base

CI - All-Cause Mortality

Home > CI - All-Cause Mortality

All-Cause Mortality

Print Download
Syntax Appendices

Description

- ▶ The crude mortality rate is the total number of deaths in a given year relative to the total population for that year (per 100,000).
- ▶ Age-specific mortality rate is the number of deaths in a given age group per 100,000 population in that age group over a specified period of time.
- ▶ Age-standardized mortality rate (SRATE): the number of deaths that would occur for a given population if that population had the same age distribution as the 1991 Canadian population (per 100,000).
- ▶ Standardized mortality ratio (SMR): the ratio of observed deaths to the number expected if the population had the same age-specific death rates as Ontario.

Related Core Indicators

- Chronic Disease Mortality
- Cancer Mortality
- Injury Mortality
- Perinatal Mortality Rate
- Child and Adolescent Mortality

Thanks!!

Public Health Ontario

Santé publique Ontario

10+ years

Mary-Anne Pietrusiak
17 years
Feb 1998 - Jan 2015

Julie Stratton
15 years
Feb 1998 - Feb 2013

Brenda Guarda
15 years
Jan 2001 - Dec 2015

Nam Bains
12 years & 5 months
Mar 1998 - Aug 2010

Carol Paul
11 years & 5 months
May 1998 - Oct 2009

Current CIWG Members

Caitlyn Paget (Chair)	York Region Public Health	Apr 2015 - Present
Amira Ali	Ottawa Public Health	Nov 2015 - Present
Susan Bondy	University of Toronto Dalla Lana School of Public Health	Jul 2001 - Present
Sherri Deamond	Durham Region Health Department	Jan 2001 - Present
Suzanne Fegan	KFL&A Public Health	Jan 2010 - Present
Natalie Greenidge	Public Health Ontario	Jan 2010 - Present
Megan Hempel Brunner	Halton Region Health Department	Sep 2011 - Present Mar 2018 - Present
Ahalya Mahendra	Public Health Agency of Canada	Nov 2008 - Present
Virginia McFarland	Grey Bruce Health Unit	Feb 2013 - Present
Anne Philipneri	Public Health Ontario	Feb 2016 - Present
Heather Pimbert	York Region Public Health	Sept 2015 - Present
Katherine Russell	Ottawa Public Health	Feb 2006 - Present
Vidya Sunil	Haliburton Kawartha Pine Ridge District Health Unit	June 2017 - Present
Fangli Xie	Durham Region Health Department	June 2017 - Present



Shanna Hoetmer
9 years & 4 months
Oct 2006 - Feb 2016

Jane Hohenadel
6 years & 9 months
Jul 2001 - Apr 2008

JoAnn Heale
5 years & 1 month
Feb 2006 - Mar 2011

6 - 9 years

Ruth Sanderson
7 years & 10 months
Feb 1998 - Dec 2005

Brenda Coleman
6 years & 7 months
Jan 2001 - Aug 2007

Doug Manuel
7 years & 9 months
Mar 1998 - Dec 2005

Jessie Wong
6 years
May 1998 - May 2004

4 - 5 years

Brenda Wannell
Oct 2006 - June 2011

Heather Schouten
Jul 2001 - Oct 2003

Jennifer Pennock
Jul 2001 - Dec 2005

Lawson Greenberg
Nov 2011 - Dec 2015

3 - 4 years

Evelyn Crosse
Jan 2001 - Sep 2004

Carla Troy
Jan 2001 - Dec 2005

Jo-Anne Peterson
May 1998 - Jan 1999
Jul 2001 - Mar 2005

Sarah Collier
May 2003 - Dec 2016

Vic Sahai
Mar 1998 - Sep 2001

Hyewon Lee-Han
Feb 1998 - June 2001

Sue Schultz
Apr 2002 - Dec 2005

Patrik Seliske
Feb 1998 - Feb 2001

