

Appendix B: Land Use Mix (LUM) score when calculating the neighbourhood at the Dissemination Area (DA), Census Tract (CT) and network buffer

Figure 1.0

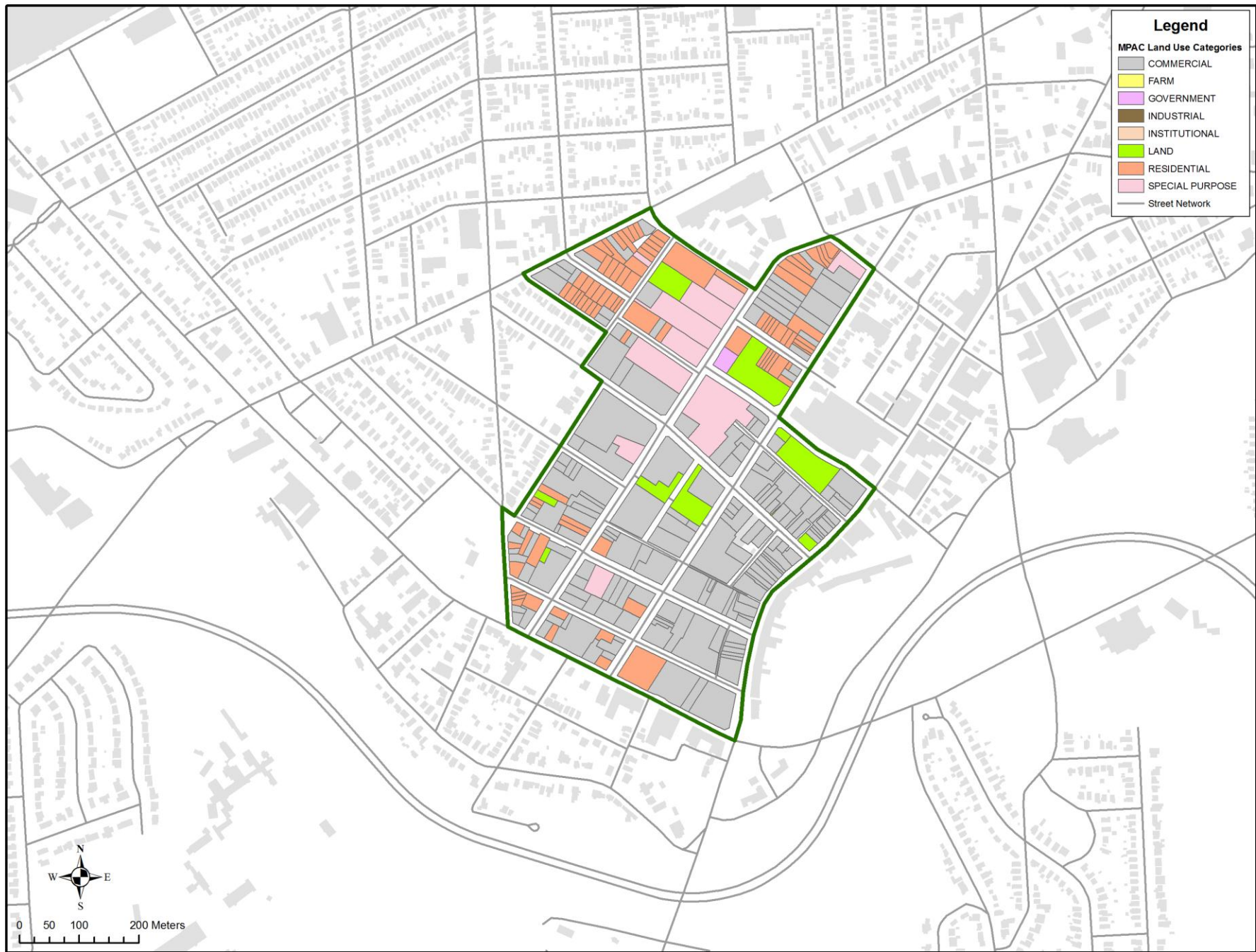


Figure 1.0: Map depicting the intersection of a Statistics Canada Dissemination Area (DA's) with Municipal Property Assessment Corporation (MPAC) primary entry land use designation parcel data.

Dissemination Area				
MPAC Category	# of Parcels	Area (Sqm)	% Area	$[P_n * \ln(P_n)] / \ln(N)$
COMMERCIAL	171	153769.24	0.63	-0.14
GOVERNMENT	1	1018.05	0.00	-0.01
LAND	10	18156.59	0.07	-0.09
RESIDENTIAL	89	41503.88	0.17	-0.14
SPECIAL PURPOSE	10	30575.23	0.12	-0.12
INSTITUTIONAL	0	NA	NA	NA
FARM	0	NA	NA	NA
INDUSTRIAL	0	NA	NA	NA
			<i>LUM</i>	0.51

Figure 2.0

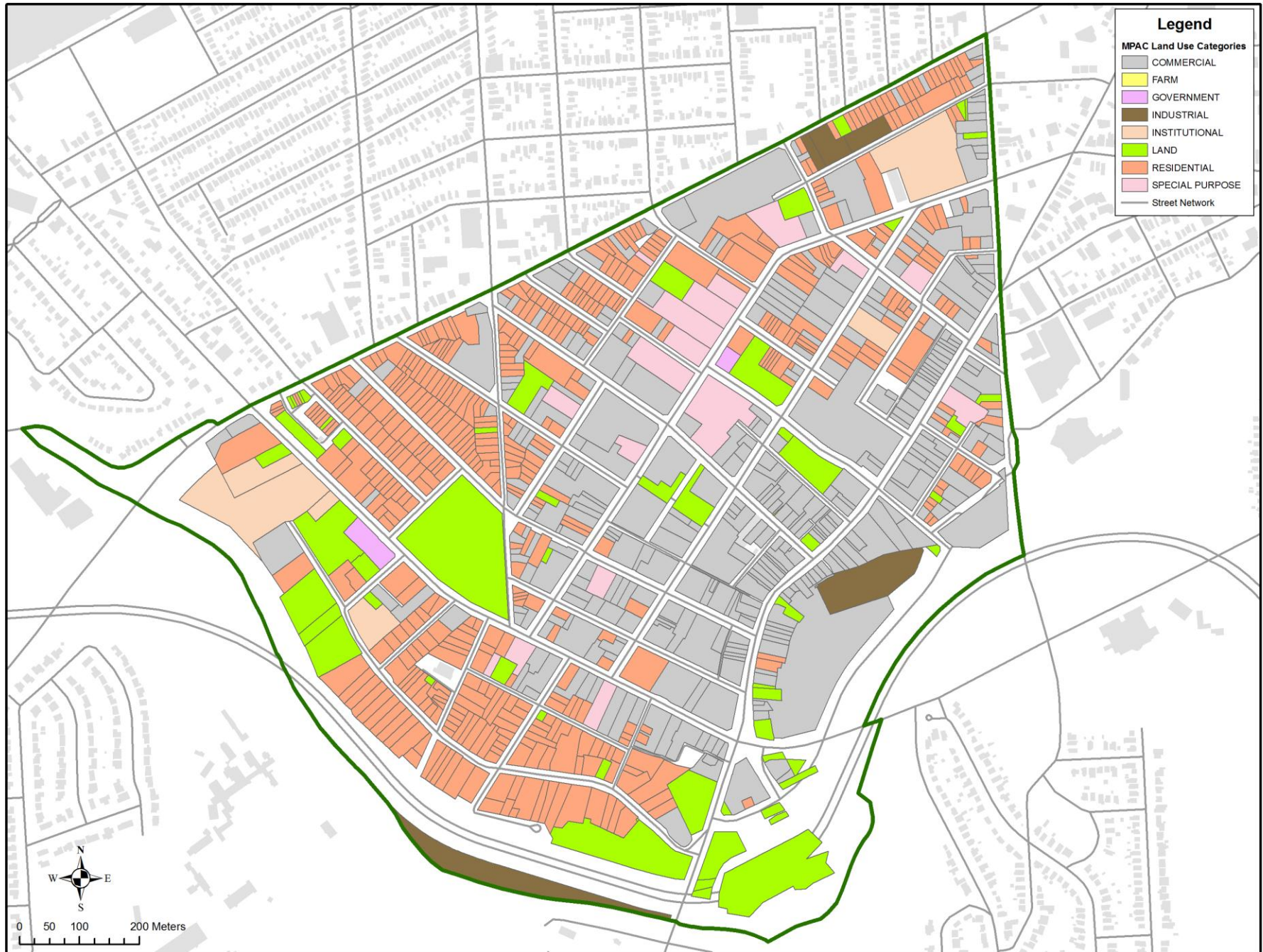


Figure 2.0: Map depicting the intersection of a Statistics Canada Census Tract (CT's) with Municipal Property Assessment Corporation (MPAC) primary entry land use designation parcel data.

Census Tract				
MPAC Category	# of Parcels	Area (Sqm)	% Area	$[P_n * \ln(P_n)] / \ln(N)$
COMMERCIAL	365	356559.92	0.41	-0.18
GOVERNMENT	2	4114.10	0.00	-0.01
INDUSTRIAL	5	28314.31	0.03	-0.05
INSTITUTIONAL	6	43436.78	0.05	-0.07
LAND	59	121788.58	0.14	-0.13
RESIDENTIAL	523	274867.09	0.31	-0.17
SPECIAL PURPOSE	17	44954.73	0.05	-0.07
FARM	0	NA	NA	NA
			<i>LUM</i>	0.69

Figure 3.0

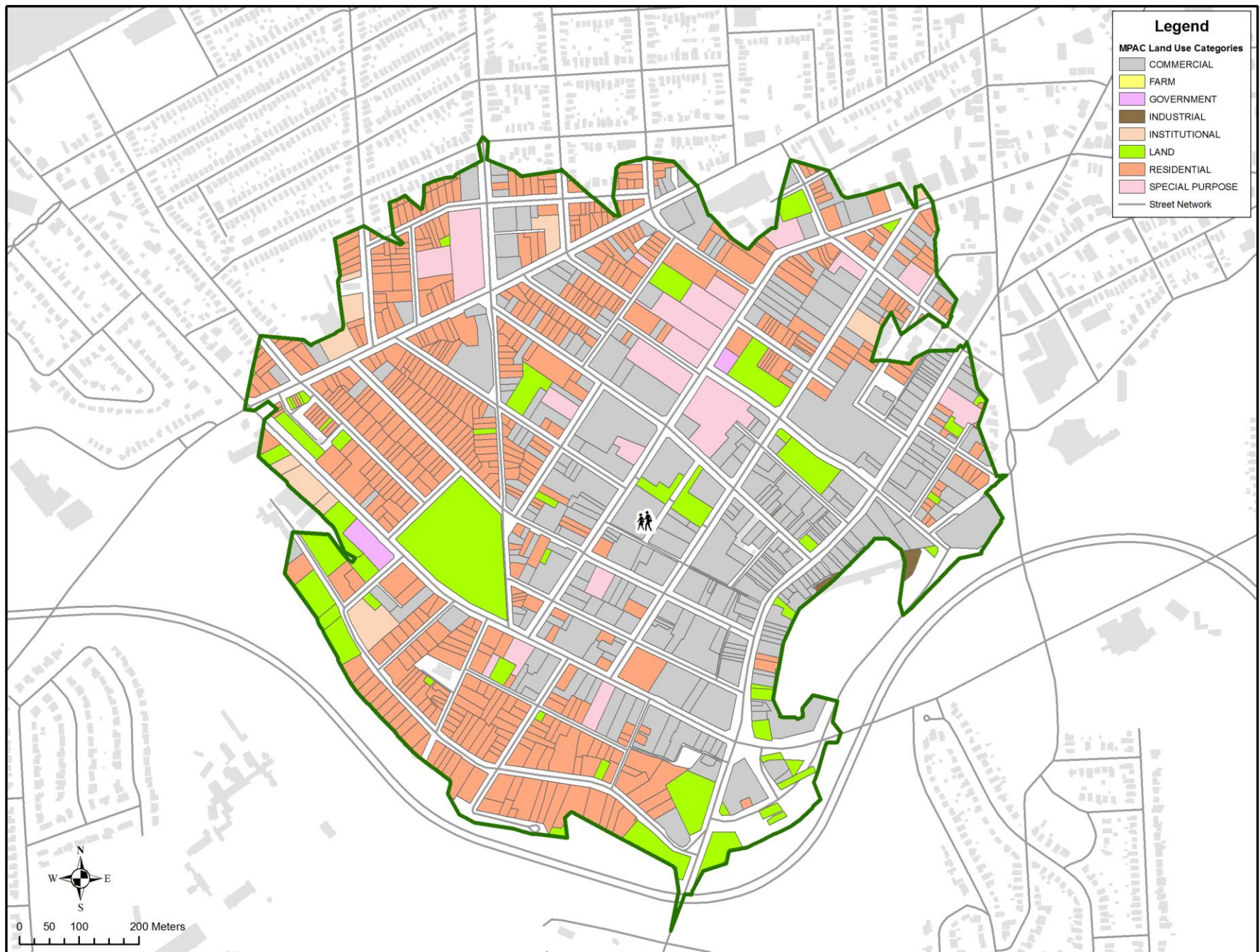


Figure 3.0: Map depicting the intersection of a Walking Area (10 min) network buffer with Municipal Property Assessment Corporation (MPAC) primary entry land use designation parcel data.

Walking Buffer (10min)				
MPAC Category	# of Parcels	Area (Sqm)	% Area	$[P_n * \ln(P_n)] / \ln(N)$
COMMERCIAL	345	298292.84	0.40	-0.18
GOVERNMENT	2	4114.10	0.01	-0.01
INDUSTRIAL	2	1593.64	0.00	-0.01
INSTITUTIONAL	9	17533.91	0.02	-0.04
LAND	55	87946.67	0.12	-0.12
RESIDENTIAL	611	281044.06	0.38	-0.18
SPECIAL PURPOSE	20	53435.75	0.07	-0.09
FARM	0	NA	NA	NA
			<i>LUM</i>	0.63