

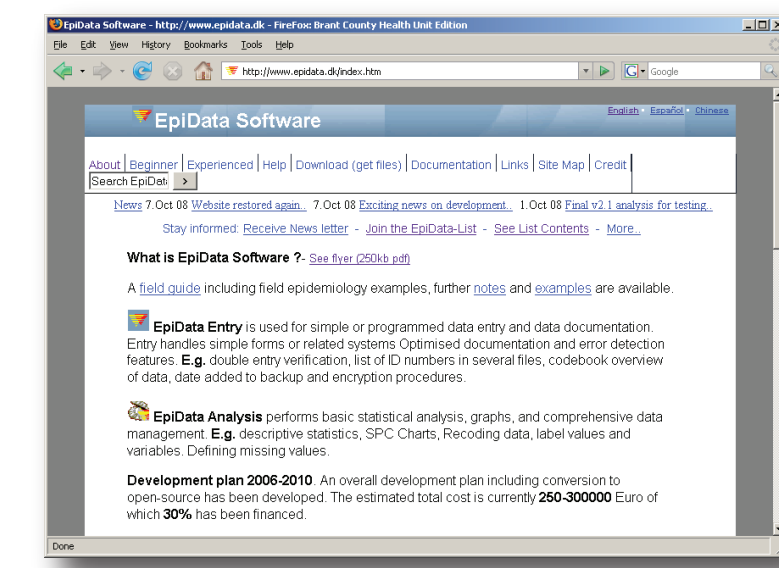
ASSOCIATION OF PUBLIC HEALTH EPIDEMIOLOGISTS IN ONTARIO

EpiData Evaluation and Redevelopment Project

What is EpiData?

EpiData is a free software suite designed to assist epidemiologists, public health investigators and others to enter, manage and analyze data in the field.

Created and maintained by the EpiData Association in Denmark. The project was initiated by public health physician Jens Lauritsen (PhD) in 1999. There is ongoing consultation with an international support group consisting of experienced health professionals (see <http://www.epidata.dk/credit.htm>).

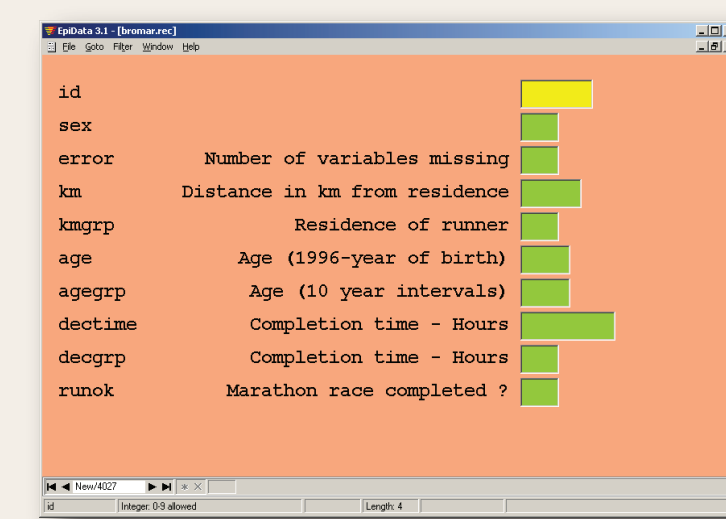


It is also used as a training tool internationally, including the Public Health Agency of Canada's (PHAC) Canadian Field Epidemiology Program.

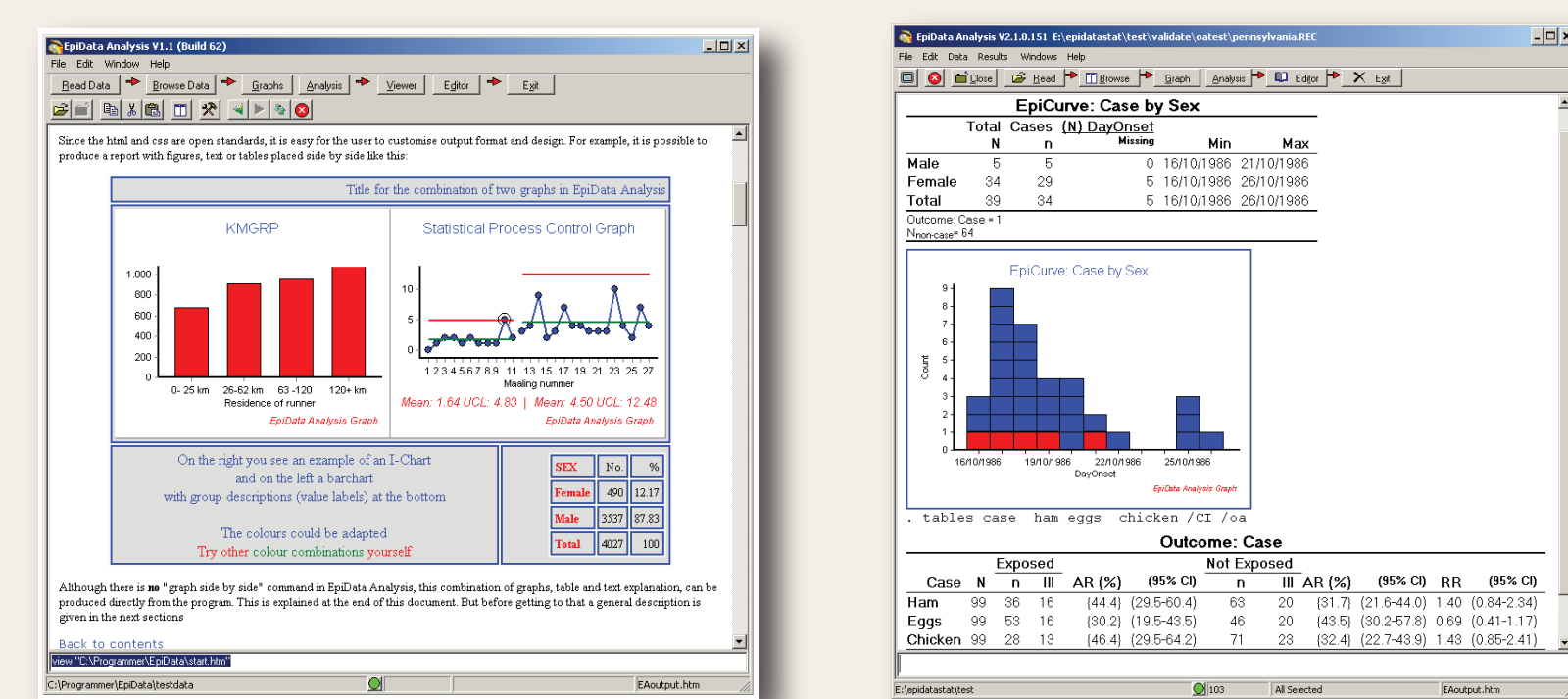
The core foundation of EpiData is the QES-CHK-REC data format of Epi Info v6, which has been successfully used for routine surveillance, outbreak investigations and research over the past 15 years. The motivation for EpiData development was the desire to maintain and extend this with enhanced tools for data documentation features not found in the Epi Info software.

Another important issue was to use open standards and create "driverless" applications resulting in programs which can run without installation by simple copying, e.g. run from a USB stick. Distribution size is small (1-2Mb).

EpiData Entry is used for simple, programmed or encrypted data entry and data documentation. Entry handles simple forms and error detection features. E.g. double entry verification.



EpiData Analysis performs basic statistical analysis, graphs, and comprehensive data management. E.g. descriptive statistics, SPC charts, recoding, defining missing values, label values and variables.



Purpose of the Project

Collaboration between Association of Public Health Epidemiologists in Ontario (APHEO), EpiData Association in Denmark and the Office of Public Health Practice, Public Health Agency of Canada.

Support and influence further development of EpiData.

Provide epidemiological expertise in the redevelopment of EpiData entry and analysis programs.

Support the creation of an "open architecture" version of EpiData.

Determine user requirements from a practical epidemiology perspective.

Assist in prototype development.

Plan and conduct an evaluation of pilot phases of EpiData redevelopment.

Assist with web-based and listserv dissemination of program results.

This project is a partnership with the EpiData Association in Denmark, the owner of EpiData intellectual property.

APHEO EpiData Expert Panel

consists of 4 panel members plus a Project Manager and one ex-officio member* from APHEO Executive

Expert Panel:

Anne Arthur (Toronto Public Health),
Mary Lou Decou, Epidemiologist

Jason Garay* (York Region Community and Health Services Department),
Lee Sieswerda (Thunder Bay District Health Unit),

Adam Stevens (Brant County Health Unit)

Project Manager

Brenda Guarda, Epidemiologist

FUNDING

This project has been made possible through a financial contribution from the Public Health Agency of Canada.

Funding Arrangements

- project began in February 2007 and will continue until December 2009.
- a total of nearly \$300,000.

Completed Activities

2006-2007

- Revision of 2006-2010 EpiData workplan
- Introduction of new EpiData commands related to outbreak analysis (i.e. Epi Curves)
- Implementation of new EpiData Analysis graphing commands
- Initiation of work on developing open-architecture of EpiData
- Initiation of planning for focused work seminars in Denmark regarding EpiData redevelopment, including APHEO participation

2007-2008

- Hiring and orientation of the APHEO permanent project manager
- Face-to-face meeting with Jens Lauritsen at APHEO Annual Conference in Ottawa (Oct. 2007)
- Pilot testing and evaluation of EpiData Analysis Version 2 with a focus on commands for Epi Curve, tables, outbreak analysis, and CPlot
- Commenced planning of the Fall 2008 field epidemiology/EpiData workshop

2008-2009 (Completed + Planned)

- Developing EpiData section of APHEO's website
- Hosting 2008 workshop using EpiData entitled Epidemiologic methods for investigation of communicable disease outbreaks at the local level
- Face-to-face meeting with Jens Lauritsen, EpiData Association at Workshop
- Development of training materials